



GAT MONTHLY MEMBERSHIP PROGRESS REPORT

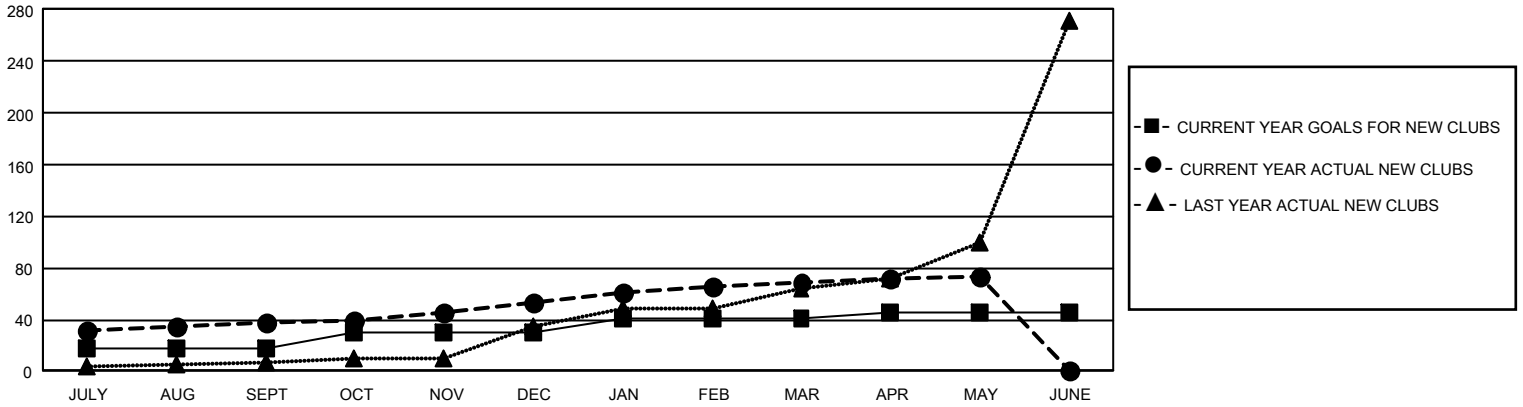
Results as of: 5/31/2022

GMT Constitutional Area 6, Group M

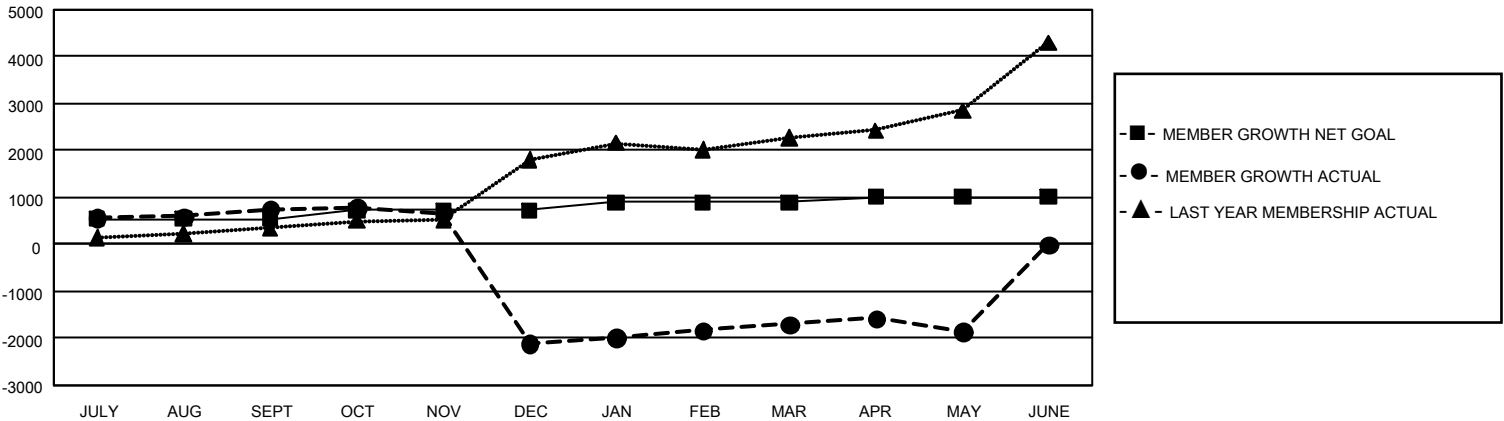
REPORT DOES NOT INCLUDE CLUBS IN UNDISTRICTED AREAS.

Clubs				Members			
RESULTS FOR 2021-2022				RESULTS FOR 2021-2022			
QUARTER	NEW CLUB GOAL	NEW CLUBS	DROPPED CLUBS	QUARTER	MEMBER GROWTH NET GOAL	MEMBER GROWTH ACTUAL	DROPPED MEMBERS ACTUAL (including transfers)
JULY/AUG/SEPT	54	38	14	JULY/AUG/SEPT	545	1,276	479
OCT/NOV/DEC	36	15	13	OCT/NOV/DEC	175	921	3,776
JAN/FEB/MAR	33	16	13	JAN/FEB/MAR	170	942	459
APR/MAY/JUNE	15	4	0	APR/MAY/JUNE	125	586	679

GOALS AND ACTUAL NEW CLUBS CUMULATIVE



GOALS AND ACTUAL MEMBERS CUMULATIVE



DROPPED CLUBS: 40	334 CLUBS OF 658 ADDED 1 OR MORE NEW MEMBERS	<u>GENDER DISTRIBUTION</u>	
<u>DROPPED MEMBERS</u>		MALE	11,312 (63.88%)
DECEASED	46	FEMALE	6,396 (36.12%)
CLUB CANCELLED	373	NON BINARY	0 (0.00%)
OTHER	4,975	PREFER NOT TO ANSWER	1 (0.01%)
TOTAL	5,394	TOTAL FAMILY UNIT MEMBERS	13,009
	CLICK HERE FOR CUMULATIVE MEMBERSHIP DATA	FAMILY MEMBERS PAYING HALF DUES	8,985